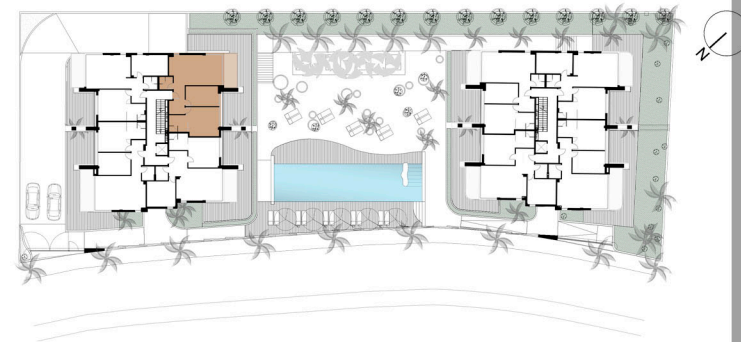




BUILDING A SECOND FLOOR C



BUILDING A	SECOND FLOOR
	APARTMENT C

LIVING ROOM-KITCHEN	27.86 m2
HALL	6.89 m2
TOILET	3.09 m2
BEDROOM 1	16.49 m2
IN SUITE BATHROOM 1	5.67 m2
BEDROOM 2	11.98 m2

TOTAL OF SURFACE OF USABLE AREA	71.98 m2
---------------------------------	----------

TOTAL OF CONSTRUCTED AREA	82.29 m2
---------------------------	----------

Surface of Communal Area	18.64 m2
--------------------------	----------

TOTAL OF COSTRUCTED AND COMMUNAL AREA	100.93 m2	(1)
---------------------------------------	-----------	-----

Surface of Terrace-Sun Area	8.39 m2	(2)
-----------------------------	---------	-----

Private Garden	00.00 m2	(3)
----------------	----------	-----

TOTAL SURFACE OF APARTAMENT (1+2+3)	109.32 m2
-------------------------------------	-----------



DUNES BEACH
MARBELLA

PROJECT OF 30 APARTMENTS IN CABOPINO
DEVELOPER: DUNES BEACH INVEST S.L.