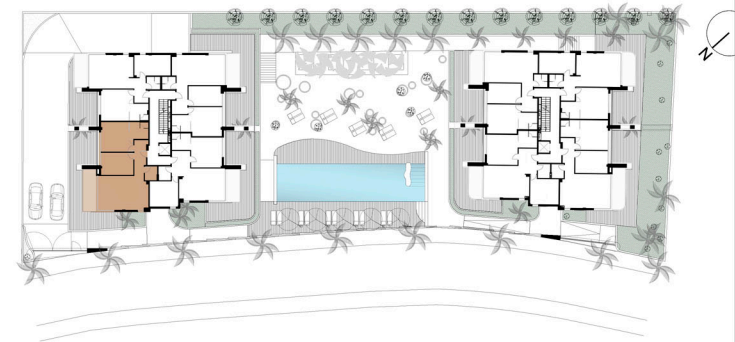




# BUILDING A SECOND FLOOR A



BUILDING A	SECOND FLOOR
	APARTMENT A

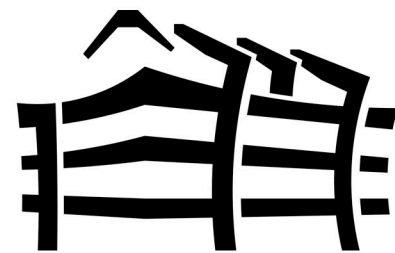
LIVING ROOM-KITCHEN	30.08 m2
HALL	7.43 m2
TOILET	3.15 m2
BEDROOM 1	15.92 m2
IN SUITE BATHROOM 1	5.92 m2
BEDROOM 2	12.97 m2

TOTAL OF SURFACE OF USABLE AREA	75.47 m2
---------------------------------	----------

TOTAL OF CONSTRUCTED AREA	86.23 m2
---------------------------	----------

Surface of Communal Area	19.53 m2
TOTAL OF COSTRUCTED AND COMMUNAL AREA	105.76 m2 (1)
<b>Surface of Terrace-Sun Area</b>	<b>10.30 m2 (2)</b>
Private Garden	00.00 m2 (3)

TOTAL SURFACE OF APARTAMENT (1+2+3)	116.06 m2
-------------------------------------	-----------



DUNES BEACH  
MARBELLA

PROJECT OF 30 APARTMENTS IN CABOPINO  
DEVELOPER: DUNES BEACH INVEST S.L.